

Electme - Best Premium Theme

Theme Installation Guide

1. How to Install Theme

Method 1: Using Admin Panel

Method 2: Via FTP Client

2. How to Activate Theme

3. Image Settings

4. Product Comments configuration

5. Features configuration

6. Blog configuration

7. Cookie configuration

1. How To Install Theme

Please, read the whole section, before attempting to install the theme.

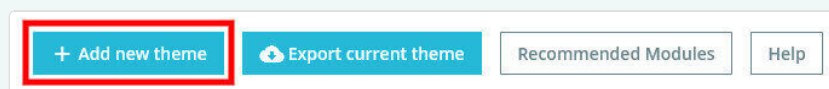
 *We recommended to always backup your system before making any upgrades or changes!*

There are two methods for installing theme

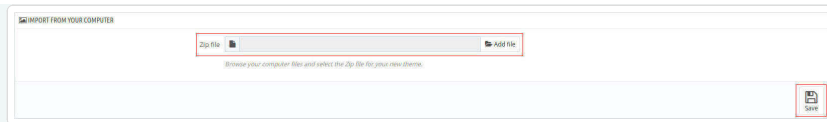
Method 1: Using Admin Panel

Log in to your site Prestashop Admin panel, **Go to Design > Theme & Logo.**

Now click on **Add new theme** to add theme.

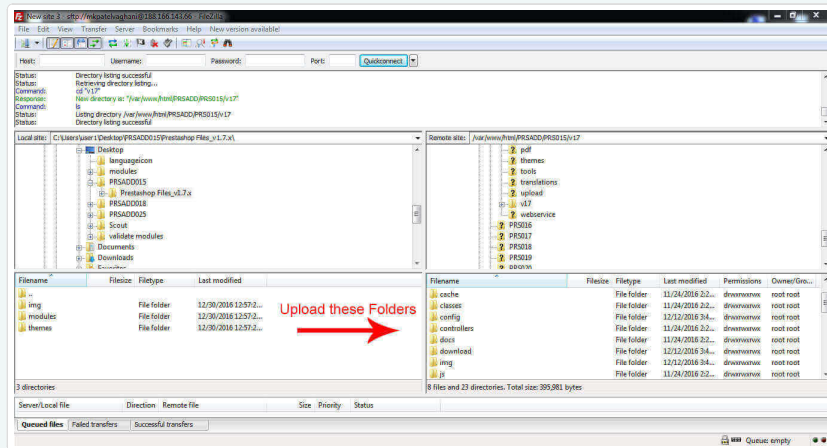


After that upload **PRS02045_Installer.zip** (Provided with theme package) in **IMPORT FROM YOUR COMPUTER** section as shown below and click on **Save** button.



Method 2: Via FTP Client

Upload theme folders **img**, **modules** and **themes** provided in our theme folder **Prestashop Files_v1.7.x** from appropriate FTP Client as shown below.



How To Activate Theme

Now to activate theme on your site from admin panel, **Go to Design > Theme & Logo**. Select our theme **PRS02045** by clicking on **Use this theme**.

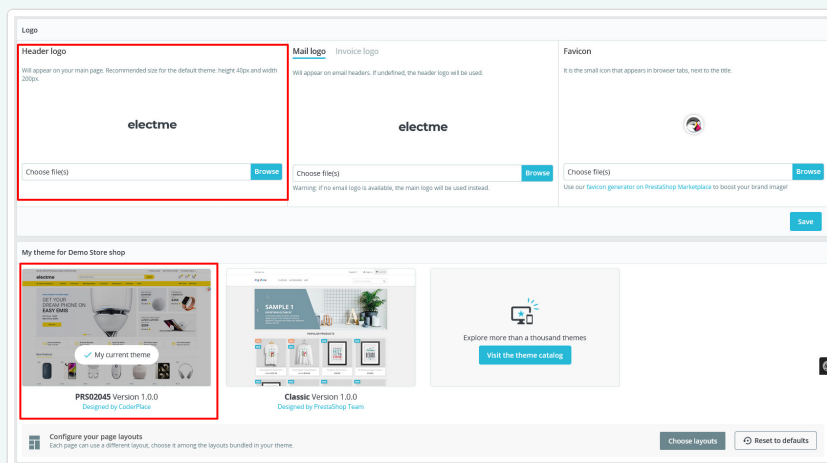
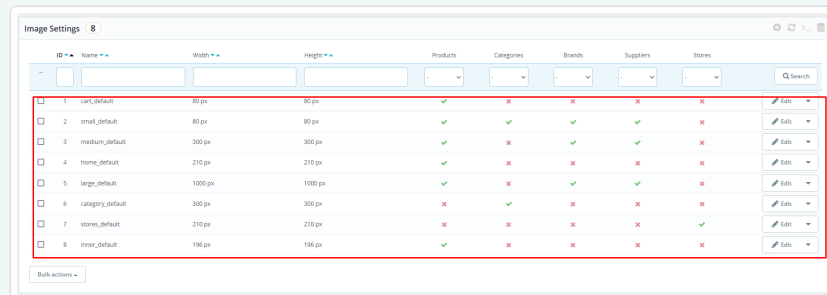


Image Settings

Our live demo uses the following image sizes for product in product information page.
So it's suggested to edit a product image size parameters.

Go to Design > Image Settings and update image size for your store.
Refer below screen shot for it.

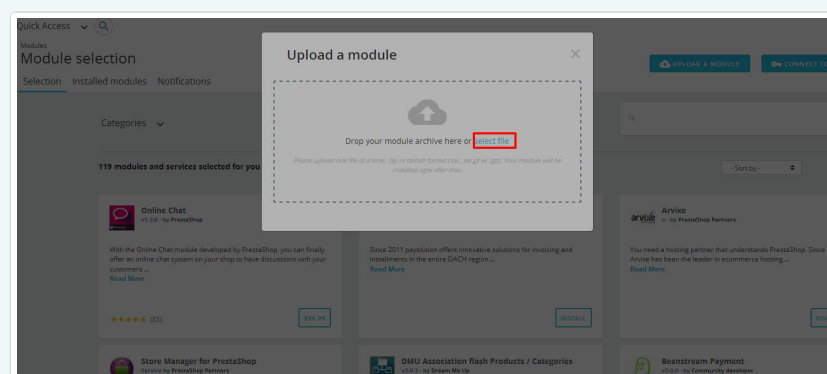


The screenshot shows the 'Image Settings' window with a table of image sizes. A red box highlights the first six rows of the table.

ID	Name	Width	Height	Products	Categories	Brands	Suppliers	Stores	Actions
1	cart_default	80 px	80 px	✓	✗	✗	✗	✗	Edit
2	small_default	80 px	80 px	✓	✓	✓	✓	✗	Edit
3	medium_default	300 px	300 px	✓	✗	✓	✗	✗	Edit
4	home_default	210 px	210 px	✓	✗	✗	✗	✗	Edit
5	large_default	1000 px	1000 px	✓	✗	✓	✓	✗	Edit
6	category_default	300 px	300 px	✗	✓	✗	✗	✗	Edit
7	stores_default	210 px	210 px	✗	✗	✗	✗	✓	Edit
8	inner_default	196 px	196 px	✓	✗	✗	✗	✗	Edit

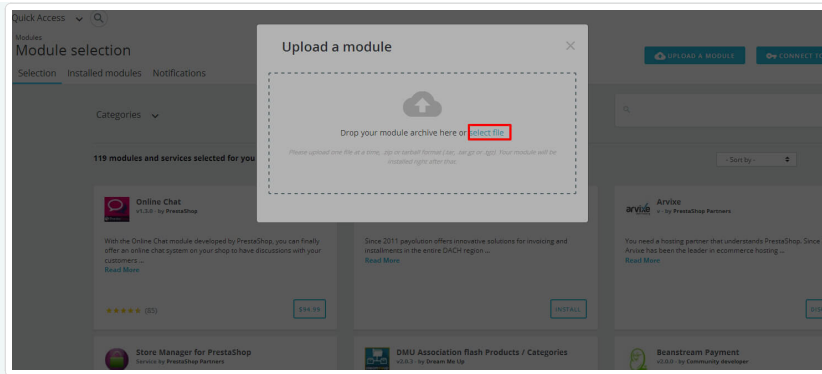
Product Comments Configuration

Go to Modules > Modules click on upload a module at Top right corner.
Upload **myprestacommments** module from theme package.



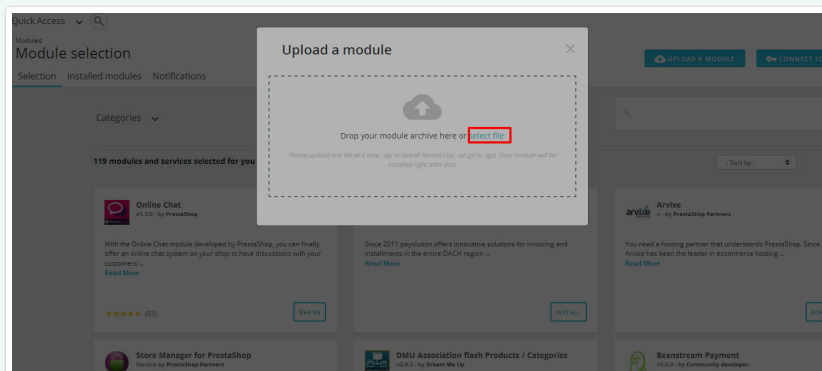
CP Feature Module Configuration

Go to Modules > Modules click on upload a module at Top right corner.
Upload **stfeature** module from theme package.

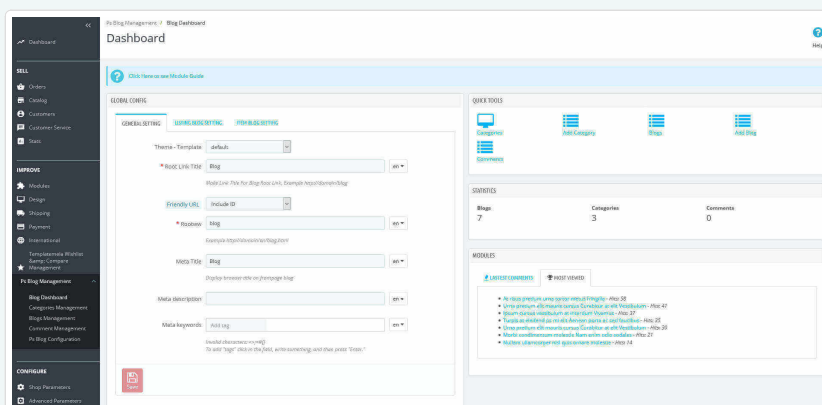


Blog Module Configuration

Go to Modules > Modules click on upload a module at Top right corner.
Upload **psblog** module from theme package.



Edit default setting from **Backoffice > PS Blog Management**



Cookie Module Configuration

Go to Modules > Modules click on upload a module at Top right corner.
Upload **cpcookie** module from theme package.

